

Hearing Assistance



INTRODUCTION

This user guide provides instructions on how to use the infra-red (IR) hearing assistance technology installed in our lecture theatre spaces.



HOW DOES IT WORK?

The IR hearing assistance system is designed to help users hear audio more clearly in lecture theatre environments. It uses a microphone to capture sound, which is transmitted wirelessly via an infrared light signal. The IR signal is picked up by portable receivers worn by listeners.



USER GUIDE

The receivers can be used with an induction loop (for use with hearing aids) or headphones:



IR Receiver



Induction Loop



Headphones

1. Connect the induction loop / headphones to the 3.5mm jack on the receiver
2. Press and hold the **On/Off** button until the **Channel** LED is illuminated
3. If necessary, press and hold the **Channel** button - ensure the unit is set to Channel 1
4. Adjust the volume as required, using the control wheel (options are 0 – 6)



FURTHER INFORMATION

To book an IR Receiver for use in a lecture theatre, please raise a Request ticket with the IT Service Desk – call (01202 9)65515 or visit <https://itservices.bournemouth.ac.uk/>

For further user instructions, please refer to the manufacturer's guide included overleaf.

Using the EKI 830

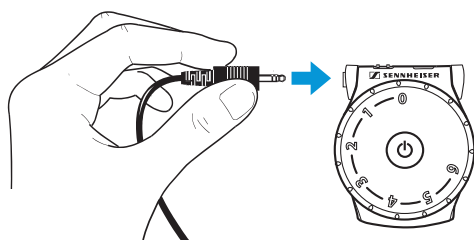
Connecting headphones or an induction coupler

The 3.5 mm jack socket of the receiver allows you to connect

- headphones such as the Sennheiser HD 410/1029, PX 90, PMX 60/90, GP 03,
- an induction coupler such as the Sennheiser EZT 3011 induction loop or the EZI 120 induction plates or
- a connection cable with 3.5 mm jack plug to your hearing aid.

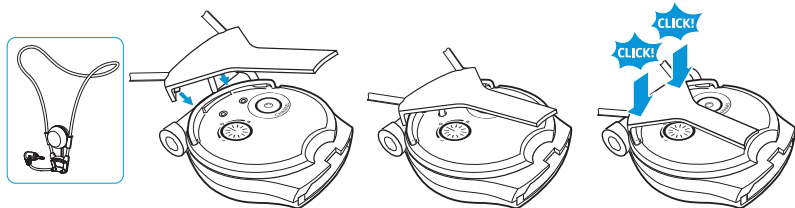
Connecting headphones

- ▶ Connect the 3.5 mm jack plug of the headphones to the socket of the receiver.

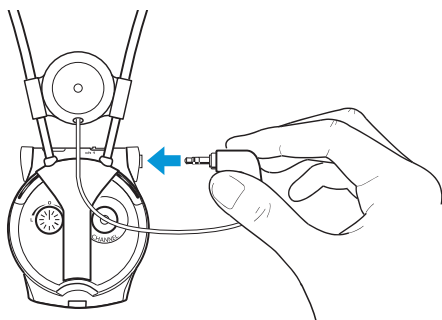


Connecting the induction loop

- ▶ Carefully remove the clip from the receiver.
- ▶ Attach the clip of the induction loop as shown.



- ▶ Connect the 3.5 mm jack plug of the induction loop to the socket of the receiver.



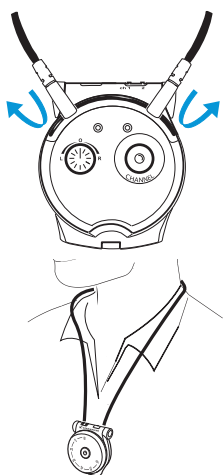
- ▶ Set your hearing aid to position "T". If your hearing aid has no position "T", please contact your hearing aid acoustician.

i For alternative connection possibilities to your hearing aid as well as the connection to cochlea implants, please contact your hearing aid acoustician.

Wearing the receiver

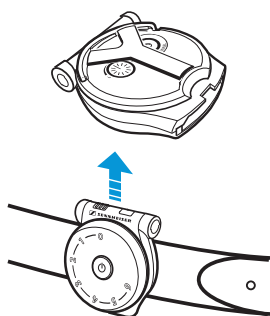
Wearing the receiver around the neck

If you want to wear the receiver around your neck, use the supplied lanyard or the EZT 3011 induction loop (see page 8). To attach the lanyard:



- ▶ Connect the fasteners of the lanyard to the metal ring at the rear of the receiver.
- ▶ Wear the receiver around your neck, with the Sennheiser logo facing away from your body.

Attaching the receiver to clothing using the clip



- ▶ Attach the clip to your clothing or belt.
- ▶ Pull the clip with the receiver away from your clothing or belt.

Switching the receiver on and off

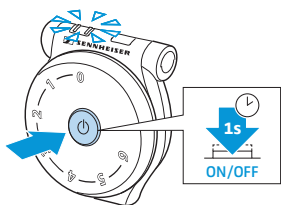


WARNING

Danger of hearing damage!

This receiver allows you to set high volumes. This can cause hearing damage in persons with healthy hearing and especially in children.

- ▶ Before using the receiver, set the volume on the receiver to a low level and gradually increase the volume to a comfortable level.



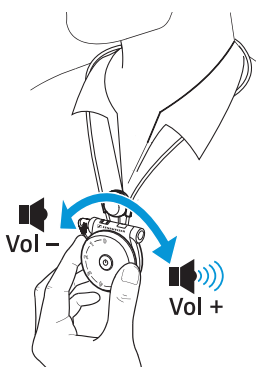
To switch the receiver **on**:

- ▶ Press the on/off button until the channel indicator lights up.
If no further buttons are pressed, the channel indicator goes off after 30 seconds.

To switch the receiver **off**:

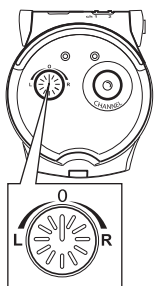
- ▶ Press the on/off button until the channel indicator lights up briefly and then goes off.

Adjusting the volume



- ▶ Use the volume control to adjust the volume to a sufficient and comfortable level.

Adjusting the balance



The balance control allows for right/left volume adjustment. Adjust the balance so that you hear equally well with both ears.

- ▶ Turn the balance control to the left **L** or right **R** in order to increase the volume for the corresponding ear.

If a problem occurs ...


You cannot hear anything

| Possible cause | Solution |
|---|---|
| There are obstacles in the light path between receiver and transmission system | Remove obstacles in the light path between receiver and transmission system to ensure a free line of sight between the two devices. |
| The receiver is exposed to direct sunlight | Avoid exposure to direct sunlight. |
| The volume of the receiver is set too low | Increase the volume by turning the volume control (see page 10). |
| The rechargeable battery is not inserted properly into the receiver | Remove the rechargeable battery and reinsert it into the receiver's battery compartment (see page 6). |
| The rechargeable battery is flat | Recharge the rechargeable battery (see page 6). |
| The receiver is outside the transmission range | Move the receiver closer to the transmitter. |
| The transmission system and the receiver are set to different frequencies | Set the transmission system and the receiver to the same frequency (see page 7). |
| The receiver is worn the wrong way round: the Sennheiser logo is facing towards your body | Wear the receiver the right way round, with the Sennheiser logo facing away from your body. |

You can hear the sound only with one ear

| Possible cause | Solution |
|----------------------------|--|
| The balance is misadjusted | Turn the balance control to the left or right (see page 10). |

You hear warning signals

| Warning signal | Meaning |
|--|---|
|  2 long beeps | The rechargeable battery is almost flat; you have approx. 15 minutes of battery power left. |

If a problem occurs that is not listed in the above tables or if the problem cannot be solved with the proposed solutions, please contact your Sennheiser partner for assistance.

To find a Sennheiser partner in your country, search at www.sennheiser.com.